

# IFMAR World Championship 1:5 Scale Touring Cars Lostallo, Switzerland 3-11 August 2013



## STAGE ONE REPORT

## Message from the Organisation Committee

The IFMAR World Championship 1:5 Scale Touring Car to be held from **August 3<sup>rd</sup> until the 11<sup>th</sup> 2013** is organised by the club Mini Racing Ticino and Moesa MRTM and in co-operation of the Switzerland Federation Swiss R/C Car Clubs Association SRCCA.

For this event the track in Lostallo in the South of Switzerland has been selected. The track is distinguished to be the longest and fastest track with generous premises in Switzerland and one of the biggest well know track in Europe. A lot of international events European Championship and a World Championship with EFRA and IFMAR compliance have already been held in responsibility of MRTM in the recent years, so the organisation committee can guarantee an improved experience with this performance licence.

We are proud of having the occasion to carry out one of the biggest event - the IFMAR World Championship 1:5 Scale Touring Car – and we will assure that the event is well run, well supported and well advertised.

For your accommodation choices we have chosen the San Bernardino region in the North. This region is well known for winter- and summer sport and experienced in handling big tourism. We are sure that you will feel you very comfortable in this giant atmosphere of the Swiss Alps and their leisure offers.

If you have any questions please be kept informed on our main portal [www.mrtm.ch](http://www.mrtm.ch) and also on our single contact point [mrtm@bluewin.ch](mailto:mrtm@bluewin.ch). Your queries will be supported and answered in a short notice time.

On behalf of the organising committee MRTM and of the Switzerland Federation SRCCA we welcome all our drivers and companies, the International Federation IFMAR with their joint blocs and the European Federation EFRA and all sponsors at the Lostallo Track.

Kindest regards

President of MRTM  
Ernesto Camponovo

President of SRCCA  
Jacqueline Aebi

**Organisation and address:**  
Mini Racing Ticino e Moesa  
CH-6558 Lostallo  
Switzerland

**Official contact points:**  
Phone: +41 91 830 17 60  
Web: [www.mrtm.ch](http://www.mrtm.ch)  
E-Mail: [mrtm@bluewin.ch](mailto:mrtm@bluewin.ch)

## Race Organisation

<b>Race Director</b>	Marco Claus, Luxembourg
<b>Assistant Race Director</b>	to be named by MRTM
<b>Technical Director</b>	Wolfgang Petermann, Germany
<b>Assistant Technical Director</b>	Ina Petermann, Germany
<b>Timing/Scorer</b>	Jeff Mersch, Luxembourg Peter Leue, Germany
<b>IFMAR Referee</b>	to be named by IFMAR
<b>EFRA Referee</b>	E Dallas Mathiesen
<b>Regional Referee</b>	Giacomo Moretti by SRCCA
<b>Registration</b>	Jacqueline Aebi, Switzerland
<b>Media</b>	to be named by MRTM
<b>Restaurant</b>	Michele Denicolà by MRTM

Further positions will be named when the agreements are firm.

## Single contact point

Official E-mail address for all your requests: [mrtm@bluewin.ch](mailto:mrtm@bluewin.ch) this address will be managed from Ernesto.

Official Phone Number Phone: **+41 91 830 17 60** will be observed by Ernesto Camponovo

All related information will be published: <http://www.mrtm.ch>

The Internet portal [www.mrtm.ch](http://www.mrtm.ch) with actual information related to the event will start at the beginning of March 2013.

**Organisation and address:**  
Mini Racing Ticino e Moesa  
CH-6558 Lostallo  
Switzerland

**Official contact points:**  
Phone: +41 91 830 17 60  
Web: [www.mrtm.ch](http://www.mrtm.ch)  
E-Mail: [mrtm@bluewin.ch](mailto:mrtm@bluewin.ch)

## Registration and Decisions

### Registration Warm Up Race

The **Warm Up Race** is scheduled **9th – 12th May 2013** and is an invitation to practice for the international professionals preparing for the **World Championship 2013** in **August 3rd until the 11th**.

**Online Registration for the Warm Up Race** Web <http://www.myrcm.ch/> menu item **upcoming events**.

Further information for the Warm Up Race are written in the invitation paper for the Warm Up Race.

### Registration World Championship

Registrations and Entry fee payments will be handled through the IFMAR responsible blocs.

### IFMAR Rules

The Warm Up race will follow the IFMAR rules for 1:5 IC Track 2013. The rules are not released yet by IFMAR. As far the rules are present we present the race schedule.

The World Championship will follow the IFMAR rules for 1:5<sup>th</sup> ICTrack 2013.

### Fuel

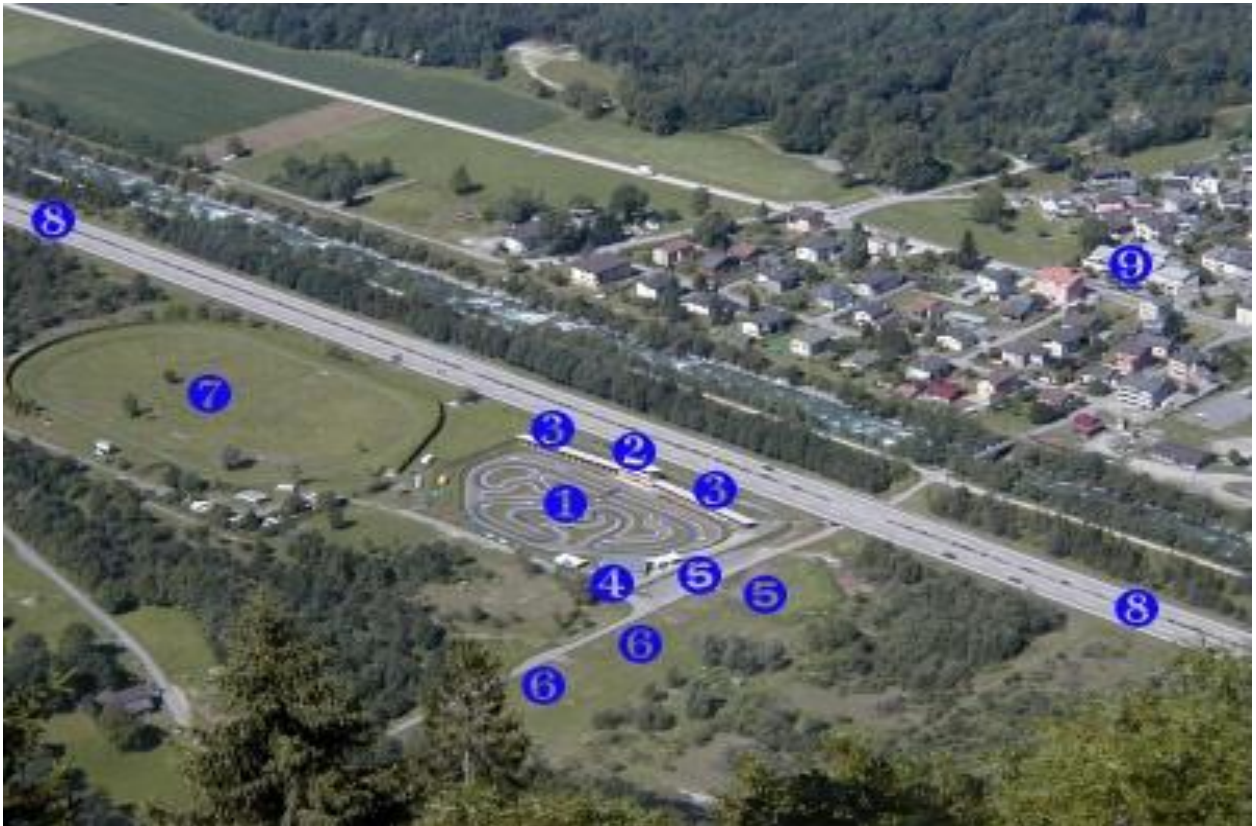
The official Petrol station nearby Lostallo (max. 10 minutes) by car will be named prior to the **Warm Up Race**. The fuel must be taken from this named station.

Organisation and address:  
Mini Racing Ticino e Moesa  
CH-6558 Lostallo  
Switzerland

Official contact points:  
Phone: +41 91 830 17 60  
Web: [www.mrtm.ch](http://www.mrtm.ch)  
E-Mail: [mrtm@bluewin.ch](mailto:mrtm@bluewin.ch)

## Location

A view from the top of the track gives you an idea of the size. The track is located right next to the highway nearby the exit Lostallo and with a few minutes' walk you are in the small village in Lostallo.



- ① Track 403 meter length
- ② Rostrum – Jury - Timekeeping
- ③ Driver area covered 150 places
- ④ Restaurant, toilets & lavatories with showers
- ⑤ Drivers parking right side
- ⑤ Exhibition area left side
- ⑥ Camping Area
- ⑦ Greyhound track
- ⑧ Freeway
- ⑨ Bank & Post & Food shop

Organisation and address:  
Mini Racing Ticino e Moesa  
CH-6558 Lostallo  
Switzerland

Official contact points:  
Phone: +41 91 830 17 60  
Web: [www.mrtm.ch](http://www.mrtm.ch)  
E-Mail: [mrtm@bluewin.ch](mailto:mrtm@bluewin.ch)

## The Track „Miniautodromo CHICCO D'ORO“



### TRACK Dimensions

Track length: 403 meter  
Track width: 4.65 – 5.20 meter  
Pit lane width: 2.25 meter  
Straightaway width: 5.20 meter  
Straightaway length: 80 meter

Pilote Views:  
High of the driver's stand 5.20 meter  
Max distance to edges 58 meter

### Driving direction

Clockwise  
Please note the arrow in the picture

Organisation and address:  
Mini Racing Ticino e Moesa  
CH-6558 Lostallo  
Switzerland

Official contact points:  
Phone: +41 91 830 17 60  
Web: [www.mrtm.ch](http://www.mrtm.ch)  
E-Mail: [mrtm@bluewin.ch](mailto:mrtm@bluewin.ch)

## Driver's stand



- 1** Driver rostrum:  
On the second floor of the rostrum the driver's stand is located with its huge dimensions equipped for 20 drivers.  
IFMAR Office room  
Transmitter impound - in respect what the ruling 2013 says about not or mandatory transmitter impound, there are 168 boxes available to store the transmitters.
- 2** Referee - Jury
- 3** Timekeeping
- 4** Result hand out for Team Managers, Jury and Press
- 5** Race Office
- 6** Pits, Mechanic Area and pass through to technical inspection

Organisation and address:  
Mini Racing Ticino e Moesa  
CH-6558 Lostallo  
Switzerland

Official contact points:  
Phone: +41 91 830 17 60  
Web: [www.mrtm.ch](http://www.mrtm.ch)  
E-Mail: [mrtm@bluewin.ch](mailto:mrtm@bluewin.ch)

## Paddocks

The huge driver paddocks consists of 150 numbered working places. The tables are grouped in 4 spots each table groups supplied with a power panel.

From the driver's rostrum the paddocks located left and right handed in symmetry to each 75 places (in total 150 places). Easy to access the area and enough room for walking around.

A view in the north and the in the south corner where the places have been placed in line. The paddocks are completely covered and equipped with day light for all night workers. The drivers paddocks are directly beside the straight and attractive for watching the race from the workplace.



## Electricity facility and plugs

At the track we have equipped all doubled with Swiss and Euro Plugs. All tables are equipped with at least 2 connector boxes doubled layered.



Be aware in hotels there are only Swiss plugs present!



**Organisation and address:**  
Mini Racing Ticino e Moesa  
CH-6558 Lostallo  
Switzerland

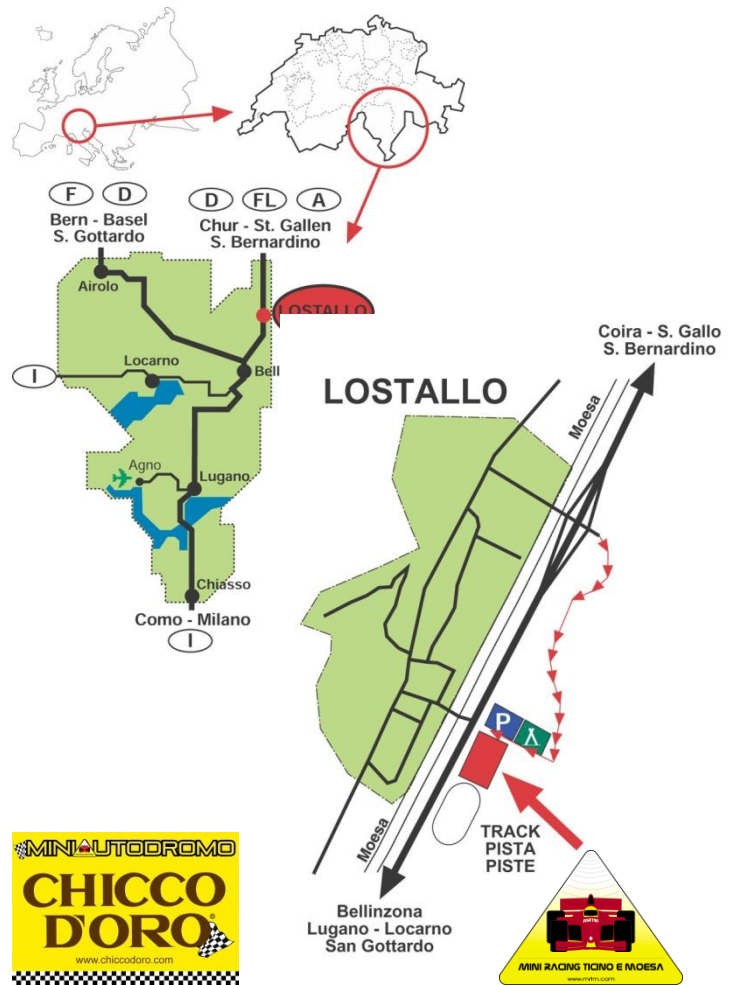
**Official contact points:**  
Phone: +41 91 830 17 60  
Web: [www.mrtm.ch](http://www.mrtm.ch)  
E-Mail: [mrtm@bluewin.ch](mailto:mrtm@bluewin.ch)



# Flight and Highway Connections



[www.mrtm.ch/web2mrtm.php](http://www.mrtm.ch/web2mrtm.php)



Lostallo GPS Navigation N 46.3111° E 9.1993°

## Roadnumbers

Basel – Gotthard	A1 / E35
Zürich – San Bernardino	A3 / A15 / E43
Mailand – Como – Bellinzona	A9 / A2 / E35
A=Autoroute / E=Europe Route	

## Driving times

Zurich Airport – Lostallo	2.5 hours
Agno Airport – Lostallo	30 minutes
Milano Malpensa Airport – Lostallo	1.5 hours
San Bernardino - Lostallo	15 minutes

## International Airports

Zürich IATA Code:	ZRH
Basel IATA Code:	BS
Geneva IATA Code:	GVA
Milano – Italy IATA Code:	LIN / MXP

**Organisation and address:**  
 Mini Racing Ticino e Moesa  
 CH-6558 Lostallo  
 Switzerland

**Official contact points:**  
 Phone: +41 91 830 17 60  
 Web: [www.mrtm.ch](http://www.mrtm.ch)  
 E-Mail: [mrtm@bluewin.ch](mailto:mrtm@bluewin.ch)

## Accomodations Camping at the track

The camping is located directly at the side of the track and 5 min. away (walking distance) from the center of Lostallo, a village of 662 residents, at 430 m above sea level, in the canton of the Grisons. In a quiet and insulated terrain, without shade. In the midst of mountains with chestnut forests ,bushes in the high mountain area and many magnificent waterfalls.



Camping area: 7000 m<sup>2</sup>  
Open: April – October  
Capacity: approx. 150 spaces (not marked)

Hot showers, washbasins, toilets (installations for the physically handicapped available)  
Electrical connection: 220 V

For reservation please use this form [http://www.mrtm.ch/Camping\\_reservation MRTM.pdf](http://www.mrtm.ch/Camping_reservation_MRTM.pdf)  
thank you.

**Organisation and address:**  
Mini Racing Ticino e Moesa  
CH-6558 Lostallo  
Switzerland

**Official contact points:**  
Phone: +41 91 830 17 60  
Web: [www.mrtm.ch](http://www.mrtm.ch)  
E-Mail: [mrtm@bluewin.ch](mailto:mrtm@bluewin.ch)

## Accomodations Hotels



### Hotel Bellevue

Hotel Bellevue  
6565 San Bernardino  
Phone +41 91 832 11 26  
Fax +41 91 832 17 97  
Email [info@bellevue-sanbernardino.ch](mailto:info@bellevue-sanbernardino.ch)  
Web [www.bellevue-sanbernardino.ch](http://www.bellevue-sanbernardino.ch)



### ApartHotel San Bernardino

6565 San Bernardino  
Signora Sonja Scolari  
Phone +41 91 832 02 46  
Fax +41 91 832 02 47  
Email [info@s-bernardino.com](mailto:info@s-bernardino.com)  
Web [www.s-bernardino.com](http://www.s-bernardino.com)



### Hotel Brocco e Posta\*\*\*

Albergo Brocco e Posta  
6565 San Bernardino  
Phone +41(0)91 832 11 05  
Fax +41(0)91 832 13 42  
Email [brocco-e-posta@bluewin.ch](mailto:brocco-e-posta@bluewin.ch)  
Web [www.brocco-e-posta.ch](http://www.brocco-e-posta.ch)



### Ostello Comunale Centro Nordico

6565 San Bernardino  
Phone +41 91 832 11 26  
Fax +41 91 832 17 97  
Email [ostello@sanbernardino.ch](mailto:ostello@sanbernardino.ch)  
Web [www.ostello-sanbernardino.ch](http://www.ostello-sanbernardino.ch)



Further information can be found here at the touristique information in English <http://www.bellinzonaturismo.ch/en.aspx>.

### Bellinzona Turismo e Eventi

Palazzo Civico  
CH 6500 Bellinzona  
Tel. +41 (0)91 825 21 31  
Fax +41 (0)91 821 41 20  
Email [info@bellinzonaturismo.ch](mailto:info@bellinzonaturismo.ch)  
Web [www@bellinzonaturismo.ch](http://www@bellinzonaturismo.ch)

Organisation and address:  
Mini Racing Ticino e Moesa  
CH-6558 Lostallo  
Switzerland

Official contact points:  
Phone: +41 91 830 17 60  
Web: [www.mrtm.ch](http://www.mrtm.ch)  
E-Mail: [mrtm@bluewin.ch](mailto:mrtm@bluewin.ch)

## Retro of MRTM event history

YEAR	What was up
2000	EFRA EC +1/4 F1 & 1/5 GT EFRA EC 1/8 over 40
2001	EFRA GP 1/5 TC EFRA GP 1/10 E EFRA GP 1/8 I.C.Track EFRA EC 1/5 TC
2002	EFRA GP 1/5 TC EFRA GP 1/8 I.C.Track EFRA EC 1/10 E TC
2003	EFRA GP 1/5 TC EFRA GP 1/8 I.C.Track EFRA EC B 1/8 I.C.Track 24H IR 1/5 TC
2004	EFRA EC LS 1/4 GT + F1 + Truck EFRA E 1/8 over 40 & 1/10 235 mm EFRA GP 1/5 TC EFRA GP 1/8 I.C.Track
2005	EFRA GP 1/5 Warm-Up WC 1/5 TC EFRA GP 1/8 I.C.Track IFMAR WC 1/5 TC
2006	EFRA GP 1/8 + 1/10 200 mm EFRA EC +1/5 F1 & 1/5 TC 24H IR 1/5 TC
2007	EFRA GP 1/8 I.C.Track EFRA GP +1/5 F1 & 1/5 TC EFRA EC A 1/8 I.C.Track 24H IR 1/5 TC
2008	EFRA GP +1/5 F1 & 1/5 TC 24H IR 1/5 TC WC Open F1 & Truck
2009	EFRA GP 1/8 Warm-Up I.C.Track IFMAR WC 1/8 I.C.Track EFRA GP +1/5 F1 & 1/5 TC
2010	EFRA EC B 1/10 I.C.Track 24H IR 1/5 TC & F1 & Truck EFRA GP +1/5 F1 & 1/5 TC
2011	WC Bike Super Bike & Stock Bike & Nitro Bike EFRA GP +1/5 F1 & 1/5 TC
2012	EFRA GP +1/5 F1 & 1/5 TC 24H IR 1/5 TC & F1 & Truck KWC Kyosho Worldcup
2013	you will see ...

sincerely yours  
the MRTM Team

**Organisation and address:**  
Mini Racing Ticino e Moesa  
CH-6558 Lostallo  
Switzerland

**Official contact points:**  
Phone: +41 91 830 17 60  
Web: [www.mrtm.ch](http://www.mrtm.ch)  
E-Mail: [mrtm@bluewin.ch](mailto:mrtm@bluewin.ch)